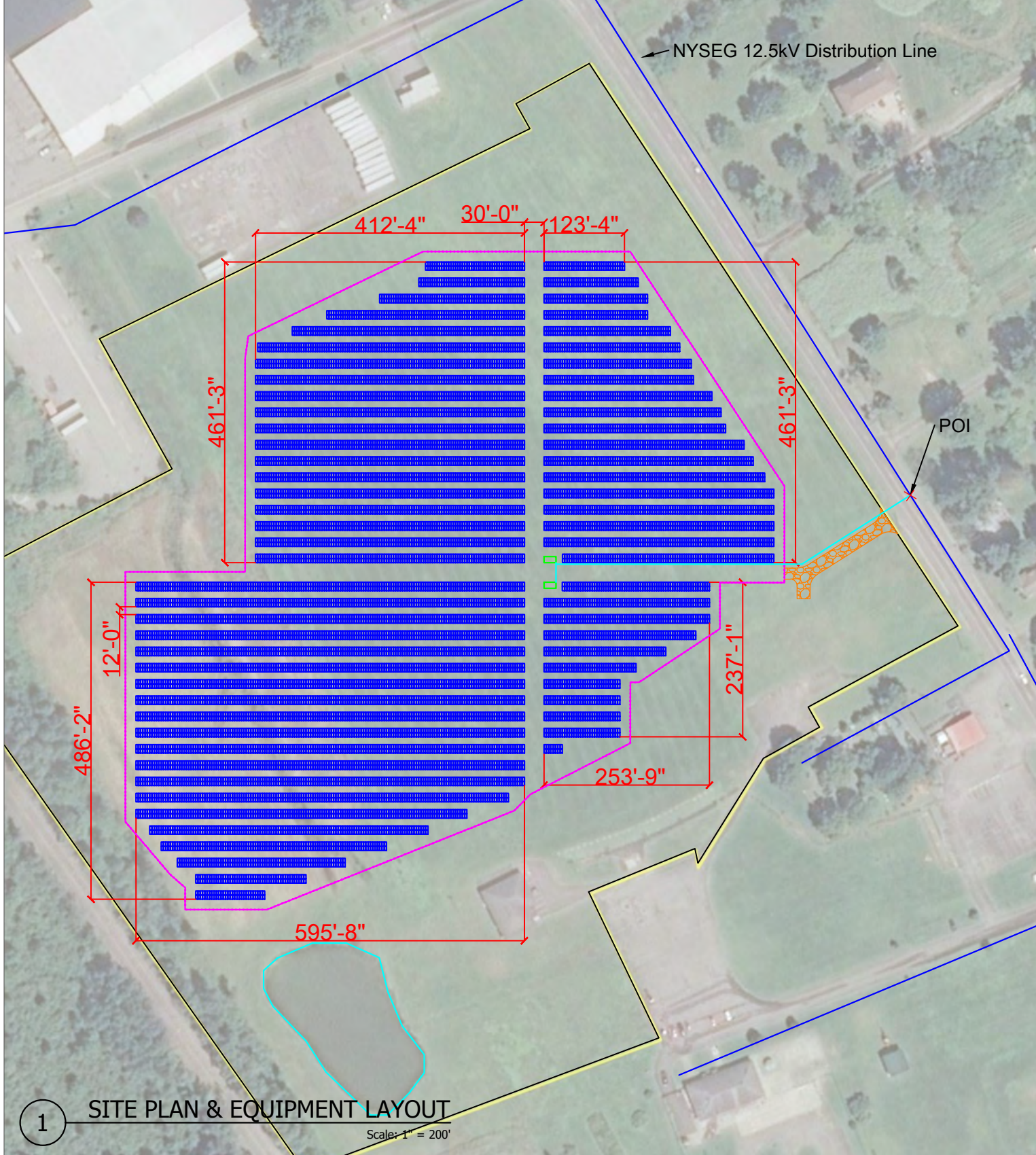




NOTES: 1. EQUIPMENT LOCATION TO BE FIELD VERIFIED
 2. SITE COMPLIANCE WITH APPROPRIATE STATE AND LOCAL CODES TO BE VERIFIED BY AUTHORITY HAVING JURISDICTION



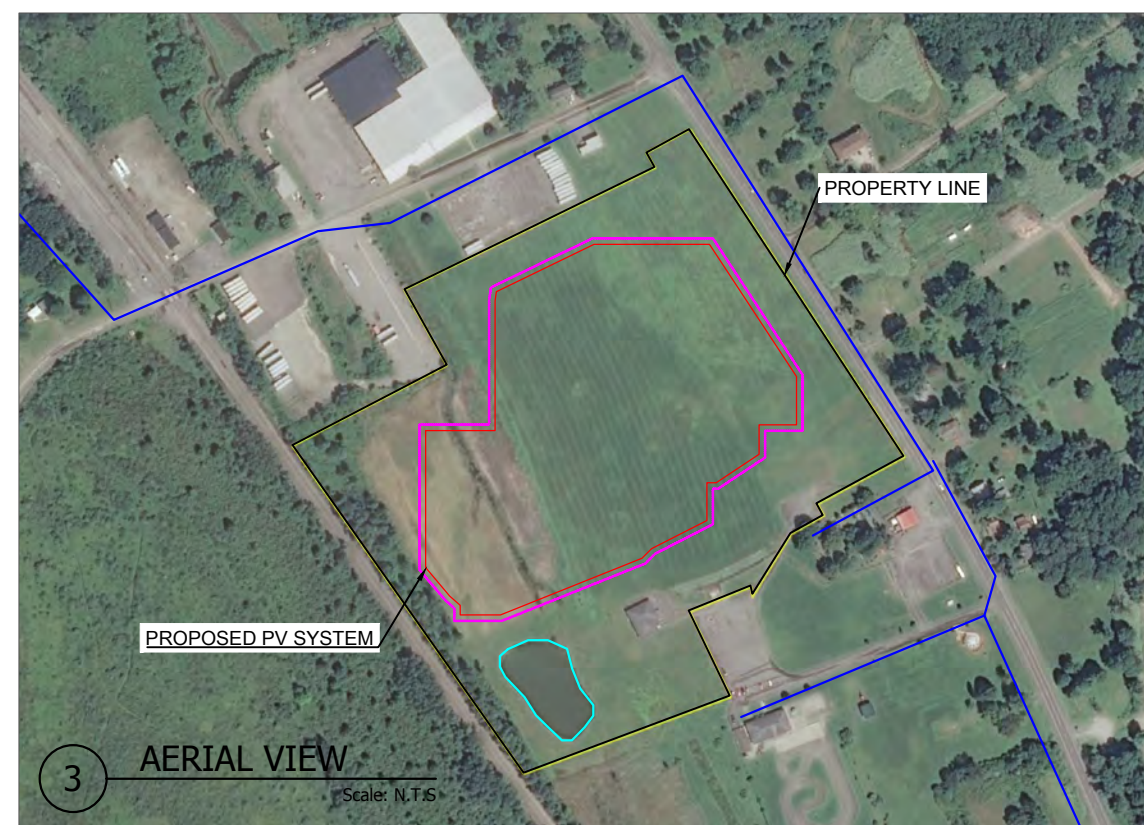
1 SITE PLAN & EQUIPMENT LAYOUT
 Scale: 1" = 200'

PV SYSTEM SUMMARY	
TOTAL STC DC SYSTEM SIZE	5,948.8 kW
SOLAR MODULE MODEL	CANADIAN SOLAR BIFACIAL DC
SOLAR MODULE STC DC RATING	440 W
SOLAR MODULE INFO	83.9" x 41.3" x 1.2", 62.6lbs
SOLAR MODULE COUNT	13,520
RACKING SYSTEM	GROUND MOUNT RACKING
PITCH OF ARRAY	20°
INVERTER MODEL	40 x CHINT CPS SCA125KTL-DO
ARRAY AZIMUTH	180°
PANEL CLEARANCE	3'
INTERCONNECTION VOLTAGE	12.5kV-3 PHASE(NYSEG)

LEGEND

- SOLAR MODULE
- EQUIPMENT PAD
- INTERCONNECTION RUN
- FENCE
- DISTRIBUTION LINE
- EQUIPMENT PAD

2 PV SYSTEM OVERVIEW
 Scale: N.T.S.



3 AERIAL VIEW
 Scale: N.T.S.

General Notes

THE INSTALLATION OF PV SYSTEM SHALL BE IN ACCORDANCE WITH THE MOST RECENT NATIONAL ELECTRIC AND BUILDING CODES AND STANDARDS, AS AMENDED BY JURISDICTION

ELECTRICAL STAMP AREA

THIS INFORMATION IS CONFIDENTIAL AND PROPRIETARY TO SOLAR LIBERTY ENERGY SYSTEMS, INC. PLEASE DO NOT SHARE THIS WITH ANYONE UNLESS THERE IS A WRITTEN APPROVAL FROM SOLAR LIBERTY.

No.	Revision/Issue	Date
0	Original Site Plan	01/14/21



Project Name and Address
 936 Conklin Rd
 Conklin, NY 13748

Drawn By CR	Checked By
Date 01/14/2021	Date
Scale AS NOTED	Sheet PV-S1